

HR6 Fuse Switch Disconnecter



Model & Meaning

HR 6 - □ / □ □
① ② ③ ④ ⑤

- ① Fuse-switch-disconnector
- ② Design code
- ③ Conventional thermal current (A)
- ④ Number of poles (2, 3)
- ⑤ "0" means no opening and closing signal device
"1" means with opening and closing signal device
(Equipped with one micro-par switch)

Other

Structure Characteritic:

The switch is composed of base, cover and arc chute, all these parts are made of arc-resisting plastics, it is whole plastic structure. The static contact is directly installed on the base, the arc chute is rasily mounted and dismantled, each arc chute has two parts: inner room and outer room, it adopts multi-pieces of metal arc-blowout grid which increase the arc-blowout capacity and prolong the service life of the contact.

NT type fusing unit is fixed inside the cover, the cover can be rotated along the supporting unit in fan shape, it has a relative big electric isolation distance which can meet the demands of the isolating seitch; The cover can be dismantled from the base easily chich make the installation and replacement of the fusing unit easy There are three group of installation hote on the base, which and meet the installation requirements of various switchgear cubicle and panel. Auxiliary contact can be mounted at the two side of the switch on demands, it can give out the signal of opening and closing the switch.

Application scope

HR6 series fuse-switch-disconnector (chere inafter refered to switch) is designed for the distribution circuit and electromot of circuit with high short circuit current, with rated AC voltage 380V and 660V (45~62Hz) , conventional thermal current up to 630A. It is used as power switch, switch disconnecter and emergent switch, and with the function of circuit protection, but not used as a direct open or close single electromotor popularly.

This product is in conformity with standard GB14048.3(idt IEC60947-3).

Normal work conditions and Installation conditions

- ※ Ambient temperatue: -5°C~40°C .
- ※ Altitude: shall not exceed 2000m.
- ※ The atmosphere condition: The relative humidity shall not exceed 50% when the environmental temperatue is +40°C in installing place; And the relative humidity may be higher at the lowertemperature condition. Such as when the humidity is 90% when the temperature is +20°C .It shall take some special management to avoid the dew occurs on the product surface due to temperature change.
- ※ Pollution grade: III
- ※ The product shall be installed in the place without remarkable shake, strike and quiver, rain and snow, in the medium without danger of exploding, and in the places without gas and conductive dust, which can make the metal go rust and affect insulation performances.

HR6

Fuse Switch Disconnect

Principal technical parameter

Switch and matched fuse link

Conventional thermal current (A)	Fuse body number	Rated operational voltage (V)	Current value of fuse body (A)
160	NT00, RT16-00	380	4, 6, 10, 16, 20, 25, 32, 35, 40, 50, 63, 80, 100, 125, 160
160	NT00, RT16-00	660	4, 6, 10, 16, 20, 25, 32, 35, 40, 50, 63, 80, 100
250	NT1, RT16-1	380	80, 100, 125, 160, 200, 224, 250
250	NT1, RT16-1	660	80, 100, 125, 160, 200
400	NT2, RT16-2	380	125, 160, 200, 224, 250, 300, 315, 355, 400
400	NT2, RT16-2	660	125, 160, 200, 224, 250, 300, 315
630	NT3, RT16-3	380	315, 355, 400, 425, 500, 630
630	NT3, RT16-3	660	315, 355, 400, 425

Technical parameter of the switch

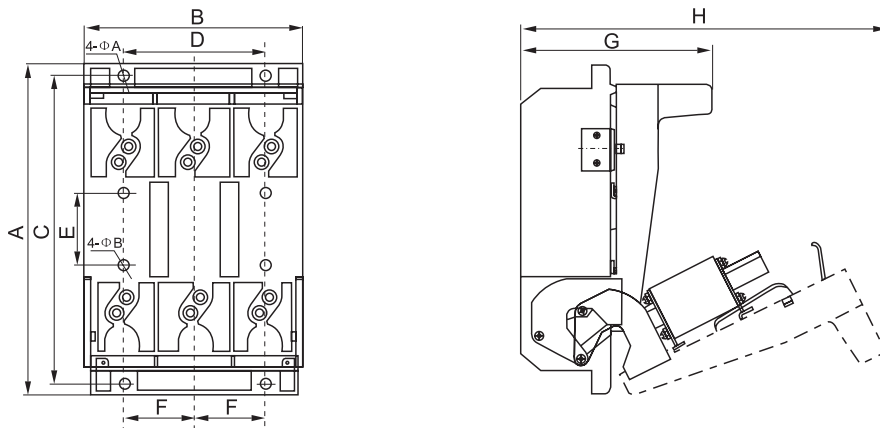
Model	HR6-160	HR6-250	HR6-400	HR6-630		
Rated insulation voltage (V)	660	660	660	660		
Conventional thermal current (A)	160	250	400	630		
Rated operational current (A)	380V	Making	160	250	400	630
	660V	Breaking	100	200	315	425
Rated making & breaking capacity (A) (1.05Ue)	380V, COS Φ =0.35	Making	1600	2500	4000	6300
	AC23B	Breaking	1280	2000	3200	5040
	660V, COS Φ =0.65	Making	480	750	1200	1890
	AC22B	Breaking	480	750	1200	1890
Rated fuse short-circuit current (kA)	50	50	50	50		
Max. Expected peak current (kA)	100	100	100	100		
Size of the applied NT fuse	00	1	2	3		
Pollution grade	3	3	3	3		
Installation category	III	III	III	III		

Rated voltage of the auxiliary switch is AC 380V, conventional thermal current is 5A, utilization category is AC-15 and the rated operational capacity is 300VA.

HR6 Fuse Switch Disconnecter

Overall & Installation Dimension

Specification	Dimension									
	A (Max)	B (Max)	C	D	E	F	G (Max)	H (Max)	ΦA	ΦB
160A	215	138	200	80	40	40	142	252	Φ7	Φ7
250A	280	189	260	120	60	60	162	320	Φ9	Φ9
400A	300	220	280	142	60	80	195	360	Φ9	Φ9
630A	300	248	280	160	60	80	195	360	Φ9	Φ9



Ordering notice

When the company orders please note clearly product type, voltage grade, current grade, pole number, operating mode and quantity and so on. Please ask technical department when you orders specially.

Example: HR6-400/30 660V fuse body current 315A 10 sets