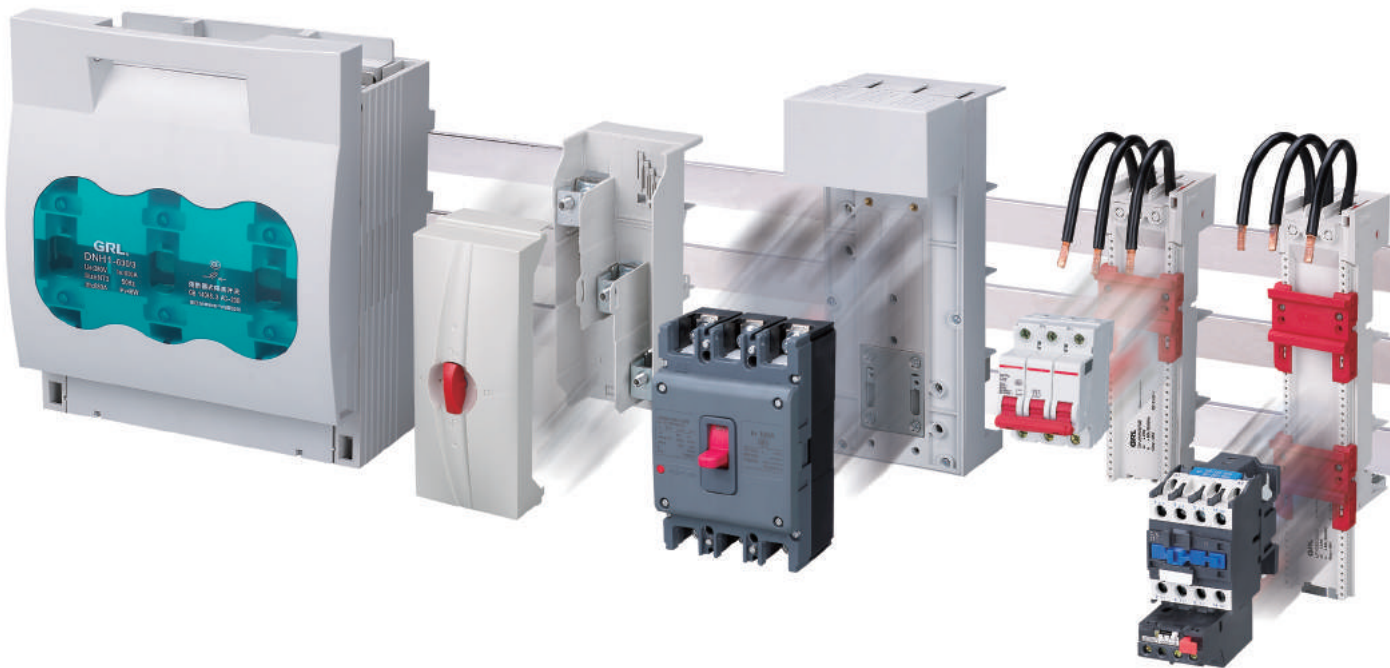


Follow your inclinations
Connect the infinite

Electrical Connection System

Product Selection Guide

GRL



Zhejiang GRL Electric Co.,Ltd. established in 1992, is a professional manufacturer who is specialized in the researches, developments, manufactures and sales of electrical components and accessories including low-voltage busbar system ,low-voltage disconnecter switch, fuse switch disconnecter, knife switch, automatic transfer switch etc.The products are widely used in electricity, construction, photo-voltaic, petroleum, chemical, metallurgical railway and other industries of the low-voltage distribution system and industrial control system.

GRL Electric gives great impetus to lean production, 5S,KPI monitor system, performance management system, on the base of enforce process and standard management thoroughly. According to the management policy "inside strong quality, outside image shaping" ,combining the system construction and humanization management, to build a team with cohesion, knowledge and innovation. With the road of brand strategy, honest cooperation, we go to all out to build our brand GRL to be a well-known brand of low-voltage electric to the domestic and even whole world.

Contents

Switch

Fuse Switch Disconnecter	1
Switch Disconnecter	5

Copper Bar

Flat Copper Bar	7
Special Copper Bar	8
Flexible Copper Bar	9

Busbar Adapter

60MM MCCB Adapter	11
185MM MCCB Adapter	14
MCB Adapter	15

Connector Terminal

Connector Terminal	17
--------------------	----

Terminal Clamp Board

Terminal Clamp Board	18
----------------------	----

Busbar Support

Busbar Support	19
----------------	----



DNH1

Fuse Switch Disconnecter
Fixed Type

Technical Parameters

Rated Current	16A,32A,63A,100A,125A,160A,200A, 250A,315A,400A,500A,630A
Rated Voltage	AC400V/690V,DC500V
Pole	3-pole
Busbar Distance	60mm
	For AC&DC applications
	Multiple frame sizes & installation types
	Flame retardant grade V0
	For fuse NH00,NH1,NH2,NH3



DNH1

Fuse Switch Disconnecter
Busbar Type

Technical Parameters

Rated Current	16A,32A,63A,100A,125A,160A,200A, 250A,315A,400A,500A,630A
Rated Voltage	AC400V/690V,DC500V
Pole	3-pole
Busbar Distance	60mm
	For AC&DC applications
	Multiple frame sizes & installation types
	Flame retardant grade V0
	For fuse NH00,NH1,NH2,NH3



DNH7

Fuse Switch Disconnecter
Fixed Type

Technical Parameters

Rated Current	16A,32A,63A,100A,125A,160A,200A, 250A,315A,400A,500A,630A
Rated Voltage	AC400V/690V,DC500V
Pole	3-pole
Busbar Distance	60mm
	For AC&DC applications
	Multiple frame sizes & installation types
	Flame retardant grade V0
	For fuse NH00,NH1,NH2,NH3



DNH7

Fuse Switch Disconnecter
Busbar Type

Technical Parameters

Rated Current	16A,32A,63A,100A,125A,160A,200A, 250A,315A,400A,500A,630A
Rated Voltage	AC400V/690V,DC500V
Pole	3-pole
Busbar Distance	60mm
	For AC&DC applications
	Multiple frame sizes & installation types
	Flame retardant grade V0
	For fuse NH00,NH1,NH2,NH3



HR6

Fuse Switch Disconnecter

Technical Parameters

Rated Current	16A,32A,63A,100A,125A,160A,200A,250A,315A,400A,500A,630A,800A
Rated Voltage	AC400V/690V
Pole	3-pole
	Copper T3
	Multiple frame sizes & installation types
	Flame retardant grade V0
	For fuse NH00,NH1,NH2,NH3



HGLR

Switch Disconnecter Fuse

Technical Parameters

Rated Current	16A,32A,63A,100A,125A,160A,200A,250A,315A,400A,500A,630A
Rated Voltage	AC400V/690V,DC500V
Pole	3-pole & 4-pole
	Copper T3
	Multiple frame sizes & installation types
	Flame retardant grade V0
	For fuse NH00,NH1,NH2,NH3



HH15

Switch Disconnecter Fuse

Technical Parameters

Rated Current	16A,32A,63A,100A,125A,160A,200A,250A,315A,400A,500A,630A,800A,1250A
Rated Voltage	AC400V/690V
Pole	3-pole & 4-pole
	Copper T3
	Multiple frame sizes & installation types
	Flame retardant grade V0
	For fuse NH00,NH1,NH2,NH3



DNH18

Vertical Fuse Switch

Technical Parameters

Rated Current	16A,32A,63A,100A,125A,160A,200A,250A,315A,400A,500A,630A
Rated Voltage	AC400V/690V,DC500V
Pole	3-pole
	Copper T3
	Multiple frame sizes & installation types
	Flame retardant grade V0
	For fuse NH00,NH1,NH2,NH3

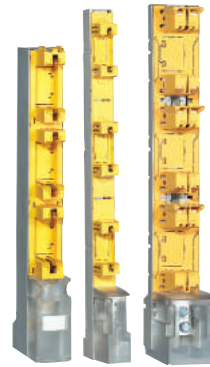


DNH5

Vertical Fuse Switch

Technical Parameters

Rated Current	16A,32A,63A,100A,125A,160A,200A,250A,315A,400A,500A,630A
Rated Voltage	AC400V/690V
Pole	3-pole
	Flame retardant grade V0
	For fuse NH00,NH1,NH2,NH3



DNTRS

Vertical Fuse Rail

Technical Parameters

Rated Current	100A,125A,160A,200A,250A,315A,400A,500A,630A
Rated Voltage	AC400V/690V
Pole	3-pole
	For fuse NH00,NH1,NH2,NH3
	Multiple frame sizes & installation types
	Flame retardant grade V0

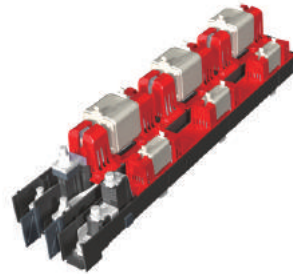


DNTF2

Vertical Fuse Rail

Technical Parameters

Rated Current	100A,125A,160A,200A,250A,315A,400A,500A,630A
Rated Voltage	AC400V/690V
Pole	3-pole
	For fuse NH00,NH1,NH2,NH3
	Multiple frame sizes & installation types
	Flame retardant grade V0



DNTF1

Vertical Fuse Rail

Technical Parameters

Rated Current	100A,125A,160A,200A,250A,400A,315A,500A,630A
Rated Voltage	AC400V/690V
Pole	3-pole
	For NH00,NH1,NH2,NH3
	Flame retardant grade V0



RT16

Fuse Base

Technical Parameters

Rated Current	100A, 125A, 160A, 200A, 250A, 315A, 400A, 500A, 630A
Rated Voltage	AC400V/690V
Pole	1-pole & 3-pole
	For fuse NH00, NH1, NH2, NH3
	Flame retardant grade V0



Mini Type

Mini Vertical Fuse Switch Disconnecter

Technical Parameters

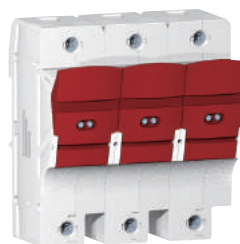
Rated Current	10A, 16A, 32A, 40A, 50A, 63A
Rated Voltage	AC400V/690V, DC500V
Pole	3-pole
	Copper T3
	Multiple frame sizes & installation types
	Flame retardant grade V0
	For fuse 10*38mm IEC 60 269-2



1-Pole Fuse Holder

Technical Parameters

Rated Current	10A, 16A, 32A, 40A, 50A, 63A, 80A, 100A
Rated Voltage	AC400V/690V, DC500V
Pole	1-pole
	Copper T3
	For fuse 10*38mm*/14*51mm/22*58mm IEC 60 269-2
	Flame retardant grade V0



3-Pole Fuse Holder

Technical Parameters

Rated Current	10A, 16A, 32A, 40A, 50A, 63A, 80A, 100A
Rated Voltage	AC400V/690V, DC500V
Pole	3-pole
	Copper T3
	For fuse 10*38mm*/14*51mm/22*58mm IEC 60 269-2
	Flame retardant grade V0

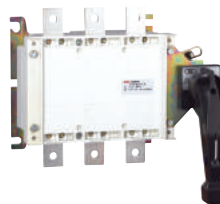


HGL

Switch Disconnecter

Technical Parameters

Rated Current	63A, 100A, 125A, 160A, 200A, 250A, 315A, 400A, 500A, 630A, 800A, 1000A, 1250A, 1600A, 2000A, 2500A, 3150A
Rated Voltage	AC400V/690V
Pole	3-pole & 4-pole
	AC-21B&AC-22B
	Direct front or external operation handle
	Multiple frame sizes & installation types
	Flame retardant grade V0



HGCLC

Switch Disconnecter (side operation type)

Technical Parameters

Rated Current	63A, 100A, 125A, 160A, 200A, 250A, 315A, 400A, 500A, 630A
Rated Voltage	AC400V/690V
Pole	3-pole & 4-pole
	Direct front or external operation handle
	Multiple frame sizes & installation types
	Flame retardant grade V0



HGLTM

Switch Disconnecter (transparent type)

Technical Parameters

Rated Current	63A, 100A, 125A, 160A, 200A, 250A, 315A, 400A, 500A, 630A
Rated Voltage	AC400V/690V
Pole	3-pole & 4-pole
	Direct front or external operation handle
	Multiple frame sizes & installation types
	Flame retardant grade V0



DNH19

Switch Disconnecter (DC type)

Technical Parameters

Rated Current	100A, 125A, 160A, 200A, 250A, 315A, 400A, 500A, 630A, 800A, 1000A, 1250A
Rated Voltage	DC1000V/1500V
Pole	2-pole & 4-pole
	Direct front or external operation handle
	Multiple frame sizes & installation types
	Flame retardant grade V0



QA

Switch Disconnecter

Technical Parameters

Rated Current	63A, 100A, 125A, 160A, 200A, 250A, 315A, 400A, 500A, 630A, 800A, 1000A, 1250A, 1600A
Rated Voltage	AC400V/690V
Pole	3-pole
	Direct front or external operation handle
	Multiple frame sizes & installation types
	Flame retardant grade V0



QP

Switch Disconnecter

Technical Parameters

Rated Current	63A, 100A, 125A, 160A, 200A, 250A, 315A, 400A, 500A, 630A, 800A, 1000A, 1250A, 1600A, 2500A
Rated Voltage	AC400V/690V
Pole	3-pole
	Direct front or external operation handle
	Multiple frame sizes & installation types
	Flame retardant grade V0



HGLD

Automatic Transfer Switch

Technical Parameters

Rated Current	63A, 100A, 125A, 160A, 200A, 250A, 315A, 400A, 500A, 630A, 800A, 1000A, 1250A, 1600A, 2500A, 3200A
Rated Voltage	AC400V/690V
Pole	3-pole & 4-pole
	Direct front or external operation handle
	Multiple frame sizes & installation types
	Flame retardant grade V0



HGLZ

Manual Transfer Switch

Technical Parameters

Rated Current	63A, 100A, 125A, 160A, 200A, 250A, 315A, 400A, 500A, 630A, 800A, 1000A, 1250A, 1600A, 2500A, 3150A
Rated Voltage	AC400V/690V
Pole	3-pole & 4-pole
	Direct front or external operation handle
	Multiple frame sizes & installation types
	Flame retardant grade V0



Flat Copper Bar

Flat Copper Bar, 12*5, Tin-Plating

Length	Cross Section	Part No.
590	60mm ²	DN51382
790	60mm ²	DN51381
2400	60mm ²	DN51618

Flat Copper Bar, 12*10, Tin-Plating

Length	Cross Section	Part No.
590	120mm ²	DN51390
790	120mm ²	DN51389
2400	120mm ²	DN51623

Flat Copper Bar, 15*5, Tin-Plating

Length	Cross Section	Part No.
2400	75mm ²	DN51619

Flat Copper Bar, 20*10, Tin-Plating

Length	Cross Section	Part No.
590	200mm ²	DN51392
790	200mm ²	DN51391
2400	200mm ²	DN51624
3600	200mm ²	DN51140

Flat Copper Bar, 20*5, Tin-Plating

Length	Cross Section	Part No.
590	100mm ²	DN51384
790	100mm ²	DN51383
2400	100mm ²	DN51620

Flat Copper Bar, 30*10, Tin-Plating

Length	Cross Section	Part No.
590	300mm ²	DN51394
790	300mm ²	DN51393
2400	300mm ²	DN51625
3600	300mm ²	DN51204

Flat Copper Bar, 25*5, Tin-Plating

Length	Cross Section	Part No.
2400	125mm ²	DN51621

Flat Copper Bar, 30*5, Tin-Plating

Length	Cross Section	Part No.
590	150mm ²	DN51388
790	150mm ²	DN51387
2400	150mm ²	DN51622



Special Copper Bar

T Section Copper Bar, 400mm²

Length	Part No.
450	DN51027
590	DN51026
650	DN51025
790	DN51024
2400	DN51023
3600	DN51000

Triple-T Section Copper Bar, 1140mm²

Length	Part No.
453	DN51188
590	DN51400
650	DN51189
790	DN51399
2400	DN51187
3600	DN51227

Double-T Section Copper Bar, 500mm²

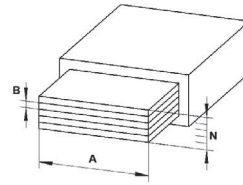
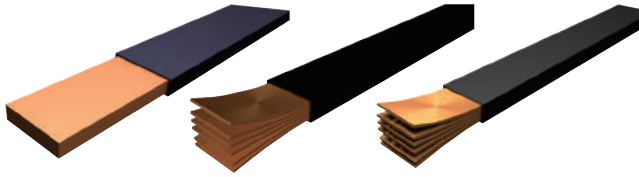
Length	Part No.
450	DN51225
590	DN51396
650	DN51226
790	DN51395
2400	DN51609
3600	DN51224

TCC Section Copper Bar, 1600mm²

Length	Part No.
492	DN51377
692	DN51378
2400	DN51610

Double-T Section Copper Bar, 720mm²

Length	Part No.
453	DN51838
590	DN51398
650	DN51831
790	DN51397
2400	DN51608
3600	DN51190



Flexible Copper Bar

2M, Bare Copper,

Working Temperature: -25°C~105°C

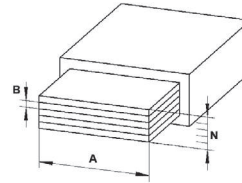
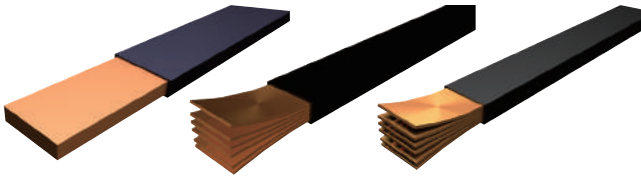
N, A, B (mm)	Part No.
8 x 6 x 0.5	DN61240
3 x 9 x 0.8	DN61241
6 x 9 x 0.8	DN61242
9 x 9 x 0.8	DN61243
3 x 13 x 0.5	DN61244
6 x 13 x 0.5	DN61245
2 x 15.5 x 0.8	DN61239
4 x 15.5 x 0.8	DN61246
6 x 15.5 x 0.8	DN61247
10 x 15.5 x 0.8	DN61248
2 x 20 x 1	DN61249
3 x 20 x 1	DN61250
4 x 20 x 1	DN61251
5 x 20 x 1	DN61252
6 x 20 x 1	DN61253
10 x 20 x 1	DN61254
2 x 24 x 1	DN61255
3 x 24 x 1	DN61256
4 x 24 x 1	DN61257
5 x 24 x 1	DN61258
6 x 24 x 1	DN61259
8 x 24 x 1	DN61260
10 x 24 x 1	DN61261
2 x 32 x 1	DN61262
3 x 32 x 1	DN61263
4 x 32 x 1	DN61264
5 x 32 x 1	DN61265
6 x 32 x 1	DN61266
8 x 32 x 1	DN61267
10 x 32 x 1	DN61268
2 x 40 x 1	DN61269
3 x 40 x 1	DN61270
4 x 40 x 1	DN61271
5 x 40 x 1	DN61272
6 x 40 x 1	DN61273
8 x 40 x 1	DN61274
10 x 40 x 1	DN61275
3 x 50 x 1	DN61276
4 x 50 x 1	DN61277
5 x 50 x 1	DN61278
6 x 50 x 1	DN61279
8 x 50 x 1	DN61280
10 x 50 x 1	DN61281
3 x 63 x 1	DN61282

2M, Halogen Free,

Working Temperature: -50°C~280°C

N, A, B (mm)	Part No.
4 x 63 x 1	DN61283
5 x 63 x 1	DN61284
6 x 63 x 1	DN61285
8 x 63 x 1	DN61286
10 x 63 x 1	DN61287
3 x 80 x 1	DN61288
4 x 80 x 1	DN61289
5 x 80 x 1	DN61290
6 x 80 x 1	DN61291
8 x 80 x 1	DN61292
10 x 80 x 1	DN61293
4 x 100 x 1	DN61294
5 x 100 x 1	DN61295
6 x 100 x 1	DN61296
8 x 100 x 1	DN61297
10 x 100 x 1	DN61298
12 x 100 x 1	DN61299
10 x 120 x 1	DN61300

N, A, B (mm)	Part No.
2 x 20 x 1	DN61649
3 x 20 x 1	DN61650
4 x 20 x 1	DN61651
5 x 20 x 1	DN61652
2 x 24 x 1	DN61655
3 x 24 x 1	DN61656
4 x 24 x 1	DN61657
5 x 24 x 1	DN61658
6 x 24 x 1	DN61659
3 x 32 x 1	DN61663
4 x 32 x 1	DN61664
5 x 32 x 1	DN61665
6 x 32 x 1	DN61666
8 x 32 x 1	DN61667
5 x 40 x 1	DN61672
6 x 40 x 1	DN61673
10 x 40 x 1	DN61675
5 x 50 x 1	DN61678
8 x 50 x 1	DN61680
10 x 50 x 1	DN61681



Flexible Copper Bar

3M, Bare Copper,

Working Temperature: -25°C~105°C

N, A, B (mm)	Part No.
6 x 9 x 0.8	DN61102
4 x 15.5 x 0.8	DN61106
6 x 15.5 x 0.8	DN61107
2 x 20 x 1	DN61109
3 x 20 x 1	DN61110
4 x 20 x 1	DN61111
2 x 24 x 1	DN61115
3 x 24 x 1	DN61116
4 x 24 x 1	DN61117
5 x 24 x 1	DN61118
3 x 32 x 1	DN61123
4 x 32 x 1	DN61124
5 x 32 x 1	DN61125
6 x 32 x 1	DN61126
8 x 32 x 1	DN61127
3 x 40 x 1	DN61130
5 x 40 x 1	DN61132
5 x 50 x 1	DN61138

3M, Tin Plating,

Working Temperature: -25°C~105°C

N, A, B (mm)	Part No.
6 x 9 x 0.8	DN61432
2 x 15.5 x 0.8	DN61433
4 x 15.5 x 0.8	DN61436
6 x 15.5 x 0.8	DN61437
2 x 20 x 1	DN61439
3 x 20 x 1	DN61440
4 x 20 x 1	DN61441
5 x 20 x 1	DN61442
2 x 24 x 1	DN61445
3 x 24 x 1	DN61446
4 x 24 x 1	DN61447
5 x 24 x 1	DN61448
6 x 24 x 1	DN61449
8 x 24 x 1	DN61450
3 x 32 x 1	DN61453
4 x 32 x 1	DN61454
5 x 32 x 1	DN61455
6 x 32 x 1	DN61456
8 x 32 x 1	DN61457
10 x 32 x 1	DN61458
3 x 40 x 1	DN61460
4 x 40 x 1	DN61461
5 x 40 x 1	DN61462
5 x 50 x 1	DN61468
8 x 50 x 1	DN61470
5 x 63 x 1	DN61474
8 x 63 x 1	DN61476



60mm Universal Busbar Adapter

Universal Busbar Adapter, 160A, 3-pole, 60mm

Adaptation	Width	Length	Part No.
Top connection to system	90	224.5	DN55160
Bottom connection to system	90	224.5	DN55017

Universal Busbar Adapter, 570A, 3-pole, 60mm

Adaptation	Width	Length	Part No.
Top/Bottom connection to system	184	323	DN55909
Mounting Plate	184	323	DN55910

Universal Busbar Adapter, 250A, 3-pole, 60mm

Adaptation	Width	Length	Part No.
Top connection to system	109	267.5	DN55250
Top connection to system	108	223.5	DN55214
Top connection to system	111	320	DN55168
Bottom connection to system	109	267.5	DN55018

Universal Busbar Adapter, 630A, 3-pole, 60mm

Adaptation	Width	Length	Part No.
Top connection to system	140	322	DN55009
Top connection to system	140	322	DN55042

Universal Busbar Adapter, 400A, 3-pole, 60mm

Adaptation	Width	Length	Part No.
Top connection to system	140	322	DN55630
Top connection to system	140	322	DN55019



DN55037



DN55157

60mm Special Busbar Adapter

Busbar Adapter,160A,3-pole,60mm, Top Connection To System

Adaptation	Width	Length	Part No.
ABB T1	90	224.5	DN55069
ABB T2-160A	90	224.5	DN55063
Siemens 3VT1	90	224.5	DN55083

Busbar Adapter,570A,3-pole,60mm, Top Connection To System

Adaptation	Width	Length	Part No.
Schneider NSX-630	140	270	DN55157

Busbar Adapter,250A,3-pole,60mm, Top Connection To System

Adaptation	Width	Length	Part No.
ABB Tmax T3	109	267.5	DN55181
ABB Tmax T4 Siemens 3VT	105	240	DN55008
Schneider NSX-250	109	267.5	DN55037
Siemens 3VA2	109	267.5	DN55162
Siemens 3VT8	109	267.5	DN55159

Busbar Adapter,580A,3-pole,60mm, Top Connection To System

Adaptation	Width	Length	Part No.
ABB Tmax T5	140	300	DN55593

Busbar Adapter,400A,3-pole,60mm, Top Connection To System

Adaptation	Width	Length	Part No.
ABB Tmax T5	140.5	327	DN55073
Schneider NSX-630(400A)	140.5	327	DN55075



DN55157



DN55158

60mm Special Busbar Adapter

Busbar Adapter,160A,3-pole,60mm, Bottom Connection To System

Adaptation	Width	Length	Part No.
ABB T1	90	224.5	DN55070
ABB T2-160A	90	224.5	DN55064
Siemens 3VT1	90	224.5	DN55084

Busbar Adapter,570A,3-pole,60mm, Bottom Connection To System

Adaptation	Width	Length	Part No.
Schneider NSX-400	140	270	DN55157

Busbar Adapter,250A,3-pole,60mm, Bottom Connection To System

Adaptation	Width	Length	Part No.
ABB Tmax T3	109	267.5	DN55158
ABB Tmax T4 Siemens 3VT8	105	240	DN55601
Schneider NSX-250	109	267.5	DN55039
Siemens 3VA2	109	267.5	DN55163
Siemens 3VT8	109	267.5	DN55161

Busbar Adapter,580A,3-pole,60mm, Bottom Connection To System

Adaptation	Width	Length	Part No.
ABB Tmax T5	140	300	DN55043

Busbar Adapter,400A,3-pole,60mm, Bottom Connection To System

Adaptation	Width	Length	Part No.
ABB Tmax T5	140.5	327	DN55074
Schneider NSX-630(400A)	140.5	327	DN55076



DN55006



DN55041

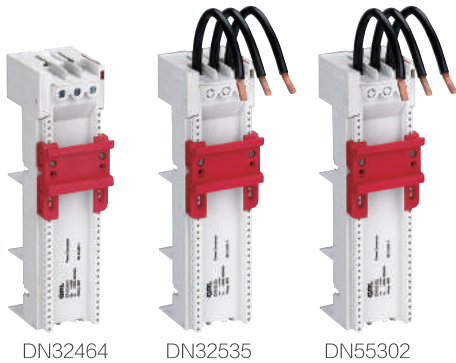
185mm Special Busbar Adapter

Busbar Adapter,400A,3-pole,185mm, Top Connection To System

Adaptation	Width	Length	Part No.
ABB Tmax T5 Schneider NSX-400	140	441.5	DN55006

Busbar Adapter,400A,3-pole,185mm, Bottom Connection To System

Adaptation	Width	Length	Part No.
ABB Tmax T5 Schneider NSX-400	140	441.5	DN55041



MCB Busbar Adapter 1 Support

MCB Adapter,16A,3-pole,1 Support

Cable Specification	W*L	Cable	Part No.
2.5mm ²	45*200	With Wire	DN55320
2.5mm ²	45*260	With Wire	DN 55321
2.5mm ²	45*200	Optional	DN55350
2.5mm ²	45*260	Optional	DN55352

MCB Adapter,25A,3-pole,1 Support

Cable Specification	W*L	Cable	Part No.
4mm ²	45*200	With Wire	DN55322
4mm ²	45*260	With Wire	DN55323
4mm ²	90*200	With Wire	DN55324
4mm ²	45*200	Optional	DN55354
4mm ²	45*260	Optional	DN55356
4mm ²	90*200	Optional	DN55358

MCB Adapter,63A,3-pole,1 Support

Cable Specification	W*L	Cable	Part No.
10mm ²	54*200	With Wire	DN55302
10mm ²	54*260	With Wire	DN55303
10mm ²	63*200	With Wire	DN55314
10mm ²	72*200	With Wire	DN55315
10mm ²	81*200	With Wire	DN55316
10mm ²	63*260	With Wire	DN55317
10mm ²	72*260	With Wire	DN55318
10mm ²	81*260	With Wire	DN55319

MCB Adapter,32A,3-pole,1 Support

Cable Specification	W*L	Cable	Part No.
6mm ²	45*200	Optional	DN55304
6mm ²	45*260	Optional	DN55305
6mm ²	45*200	With Wire	DN55306
6mm ²	45*260	With Wire	DN55307
6mm ²	54*200	Optional	DN55360
6mm ²	54*260	Optional	DN55362
6mm ²	54*200	With Wire	DN55364
6mm ²	54*260	With Wire	DN55366
6mm ²	63*200	With Wire	DN55368
6mm ²	72*200	With Wire	DN55370
6mm ²	81*200	With Wire	DN55372
6mm ²	63*260	With Wire	DN55374
6mm ²	72*260	With Wire	DN55376
6mm ²	81*260	With Wire	DN55378

MCB Adapter,80A,3-pole,1 Support

Cable Specification	W*L	Cable	Part No.
16mm ²	54*200	Optional	DN55300
16mm ²	54*260	Optional	DN55301
16mm ²	63*200	Optional	DN55308
16mm ²	72*200	Optional	DN55309
16mm ²	81*200	Optional	DN55310
16mm ²	63*260	Optional	DN55311
16mm ²	72*260	Optional	DN55312
16mm ²	81*260	Optional	DN55313



MCB Busbar Adapter, 2 Supports

MCB Adapter,16A,3-pole,2 Supports

Cable Specification	W*L	Cable	Part No.
2.5mm ²	45*200	With Wire	DN55345
2.5mm ²	45*260	With Wire	DN55346
2.5mm ²	45*200	Optional	DN55351
2.5mm ²	45*260	Optional	DN55353

MCB Adapter,25A,3-pole,2 Supports

Cable Specification	W*L	Cable	Part No.
4mm ²	45*200	With Wire	DN55347
4mm ²	45*260	With Wire	DN55348
4mm ²	90*200	With Wire	DN55349
4mm ²	45*200	Optional	DN55355
4mm ²	45*260	Optional	DN55357
4mm ²	90*200	Optional	DN55359

MCB Adapter,63A,3-pole,2 Supports

Cable Specification	W*L	Cable	Part No.
10mm ²	54*200	With Wire	DN55327
10mm ²	54*260	With Wire	DN55328
10mm ²	63*200	With Wire	DN55339
10mm ²	72*200	With Wire	DN55340
10mm ²	81*200	With Wire	DN55341
10mm ²	63*260	With Wire	DN55342
10mm ²	72*260	With Wire	DN55343
10mm ²	81*260	With Wire	DN55344

MCB Adapter,32A,3-pole,2 Supports

Cable Specification	W*L	Cable	Part No.
6mm ²	45*200	Optional	DN55329
6mm ²	45*260	Optional	DN55330
6mm ²	45*200	With Wire	DN55331
6mm ²	45*260	With Wire	DN55332
6mm ²	54*200	Optional	DN55361
6mm ²	54*260	Optional	DN55363
6mm ²	54*200	With Wire	DN55365
6mm ²	54*260	With Wire	DN55367
6mm ²	63*200	With Wire	DN55369
6mm ²	72*200	With Wire	DN55371
6mm ²	81*200	With Wire	DN55373
6mm ²	63*260	With Wire	DN55375
6mm ²	72*260	With Wire	DN55377
6mm ²	81*260	With Wire	DN55379

MCB Adapter,80A,3-pole,2 Supports

Cable Specification	W*L	Cable	Part No.
16mm ²	54*200	Optional	DN55325
16mm ²	54*260	Optional	DN55326
16mm ²	63*200	Optional	DN55333
16mm ²	72*200	Optional	DN55334
16mm ²	81*200	Optional	DN55335
16mm ²	63*260	Optional	DN55336
16mm ²	72*260	Optional	DN55337
16mm ²	81*260	Optional	DN55338



Connector Terminal

Max Current (A)	Applicable Copper Bar	Applicable Copper Bar (Cable)	Opening Space	Part No.
180	5mm Flat Copper Bar	1.5-16 mm ² , AWG14-6	/	DN54284
180	10mm Flat Copper Bar	1,5-16mm ² ,AWG14-6	/	DN54289
270	5mm Flat Copper Bar	4-35mm ² ,AWG10-2	/	DN54285
270	10mm Flat Copper Bar	4-35mm ² ,AWG10-2	/	DN54290
400	5mm Flat Copper Bar	16-70mm ² ,AWG14-2/0	/	DN54287
400	10mm Flat Copper Bar & Special Section Copper Bar	16-70mm ² ,AWG14-2/0	/	DN54292
440	5mm Flat Copper Bar	16-120mm ² /AWG4-MCM250	/	DN54608
440	10mm Flat Copper Bar & Special Section Copper Bar	16-120mm ² /AWG4-MCM250	/	DN54203

Max Current (A)	Applicable Copper Bar	Applicable Copper Bar (Cable)	Opening Space	Part No.
1600	30 × 10mm Flat Copper Bar & Special Copper Bar	/	55 × 10-128	DN54069
1600	30 × 10mm Flat Copper Bar & Special Section Copper Bar	/	68 × 10-28	DN54070
1600	30 × 10mm Flat Copper Bar & Special Section Copper Bar	/	105 × 10-28	DN54071
750	20, 25,30 × 5,10mm Flat Copper Bar & Special Section Copper Bar	Flat copper bar 30 × 20	/	DN54319
800	20, 25,30 × 5,10mm Flat Copper Bar & Special Section Copper Bar	Flat copper bar 30 × 20	/	DN54759

Max Current (A)	Applicable Copper Bar	Applicable Copper Bar (Cable)	Opening Space	Part No.
500	20,25, 30 x 5,10mm Flat Copper Bar & Special Section Copper Bar	Cu/Al 95-185mm ²	/	DN54317
600	20,25,30 × 5,10mm Flat Copper Bar & Special Section Copper Bar	Cu / Al 95 - 300mm ²	/	DN54760

Max Current (A)	Applicable Copper Bar	Opening Space	Part No.
Side:1600A, Middle:1600A	Double-T Section Copper Bar, 320-800mm ²	41 × 20-42	DN54905
Side:1600A, Middle:1600A	Double-T Section Copper Bar, 500-750mm ²	51 × 5-28	DN54906
Side:1600A, Middle:1600A	Double-T Section Copper Bar, 600-900mm ²	64 × 5-28	DN54907
630A	30 × 10 Flat Copper Bar,Double-T Section Copper Bar And Triple-T Section Cooper Bar, 95-300mm ²	/	DN54094
1250A	Flat Copper Bar,Max:40 × 20	/	DN54092
1600A	Double-T Section Copper Bar, Length:50mm, Spacing:9-20mm	/	DN54827
1600A	Double-T Section Copper Bar, Length:95mm, Spacing:50-60mm	/	DN54145
1600A	Double-T Section Copper Bar, Length:150mm, Spacing:100-110mm	/	DN54829
2500A	Triple-T Section Copper Bar, Length:95mm, Spacing:50-60mm	/	DN54274L
2500A	Triple-T Section Copper Bar, Length:150mm, Spacing:100-110mm	/	DN54275L



DN54240

DN54243

DN54318

DN54563

DN54753

Terminal Clamp Board

Universal Terminal Clamp Board, 1-pole

Max Current	Connection	Applicable Copper Bar	Cover	Part No.
500A	95–185mm ²	12 * 5 -30 * 5、10mm, T,Double-T And Triple-T Section Copper Bar	With	DN54318
600A	120–300mm ²	12 * 5 -30 * 5、10mm, T,Double-T And Triple-T Section Copper Bar	With	DN54761

Terminal Clamp Board, 60mm,3-pole

Max Current	Connection	Applicable Copper Bar	Cover	Part No.
80A	1.6–16mm ²	12 * 5 -30 * 5、10mm, T, Double-T And Triple-T Section Copper Bar	With Touch Protection And Spring Terminal	DN54563
300A	60–50mm ²	12 * 5 -30 * 5、10mm, T, Double-T And Triple-T Section Copper Bar	With	DN54240
440A	35–120mm ²	12 * 5 -30 * 5、10mm, T, Double-T And Triple-T Section Copper Bar	With	DN54243
460A	95–185mm ²	12 * 5 -30 * 5、10mm, T, Double-T And Triple-T Section Copper Bar	With	DN54199
560A	120–300mm ²	12 * 5 -30 * 5、10mm, T, Double-T And Triple-T Section Copper Bar	Without	DN54537
560A	120–300mm ²	12 * 5 -30 * 5、10mm, T, Double-T And Triple-T Section Copper Bar	With	DN54754
800A	30 * 20mm Multi-Layer Flexible Copper Bar	12 * 5 -30 * 5、10mm, T, Double-T And Triple-T Section Copper Bar	With	DN54753
800A	Max 32–20mm Flat Copper Bar	12 * 5 -30 * 5、10mm, T, Double-T And Triple-T Section Copper Bar	Without	DN54538

Terminal Clamp Board, 60mm,4-pole

Max Current	Connection	Applicable Copper Bar	Cover	Part No.
560A	120–300mm ²	12、30 * 5、10mm, T,Double-T And Triple-T Section Copper Bar	Without	DN54147
800A	Max 32–20mm Flat Copper Bar	12、30 * 5、10mm, T,Double-T And Triple-T Section Copper Bar	Without	DN54162

Terminal Clamp Board, 100mm,3-pole

Max Current	Connection	Applicable Copper Bar	Cover	Part No.
400A	120–240mm ²	12 * 5 -30 * 5、10mm, T,Double-T And Triple-T Section Copper Bar	With	DN54100
630A	150–300mm ²	12 * 5 -30 * 5、10mm, T,Double-T And Triple-T Section Copper Bar	With	DN54101

Terminal Clamp Board, 185mm,3-pole

Max Current	Connection	Applicable Copper Bar	Cover	Part No.
400A	120–240mm ²	12 * 5 -30 * 5、10mm, T,Double-T And Triple-T Section Copper Bar	With	DN54185
400A	120–240mm ²	12 * 5 -30 * 5、10mm, T,Double-T And Triple-T Section Copper Bar	With	DN54187
630A	150–300mm ²	12 * 5 -30 * 5、10mm, T,Double-T And Triple-T Section Copper Bar	With	DN54186
630A	150–300mm ²	12 * 5 -30 * 5、10mm, T,Double-T And Triple-T Section Copper Bar	With	DN54188



Busbar Support

Universal Busbar Support, 1-pole

Applicable Copper Bar	Part No.
Double-T Section Copper Bar	DN52116
12, 20, 30 * 5, 10 Flat Copper Bar	DN52601

Universal Busbar Support, 2-pole, 60mm

Applicable Copper Bar	Part No.
12, 20, 30 * 5, 10 Flat Copper Bar	DN52356
12, 20, 30 * 5, 10 Flat Copper Bar	DN52602

Universal Busbar Support, 3-pole , 60mm

Applicable Copper Bar	Part No.
12, 15, 20, 25, 30 * 10 Flat Copper Bar	DN52495
12, 15, 20, 25, 30 * 5 Flat Copper Bar	DN52002
12, 15, 20, 25, 30 * 10 Flat Copper Bar	DN52500
12, 15, 20, 25, 30 * 5 Flat Copper Bar	DN52005
12, 15, 20, 25, 30 * 10 Flat Copper Bar With Integrated Terminal 1.5-16 mm ²	DN52484
12, 15, 20, 25, 30 * 5 Flat Copper Bar With Integrated Terminal 1.5-16 mm ²	DN52009
12, 20, 30 * 5, 10 Flat Copper Bar	DN52508
Double-T Section Copper Bar	DN52231
Triple-T Section Copper Bar	DN52232
30 * 10 Flat Copper Bar & T - Section Copper Bar	DN52010

Universal Copper Bar Support, 4-pole, 60mm

Applicable Copper Bar	Part No.
30 * 10 Flat Copper Bar & T - Section Copper Bar	DN52004
12, 20, 30 * 5, 10 Flat Copper Bar	DN52357
12, 15, 20, 25, 30 * 5, 10 Flat Copper Bar	DN52485



DN52001 DN52479

Busbar Support

Universal Busbar Support, 3-pole , 100mm

Applicable Copper Bar	Part No.
30、40、50、60 * 10 Flat Copper Bar	DN52479

Universal Busbar Support, 3-pole, 185mm

Applicable Copper Bar	Part No.
30-120 * 5 Flat Copper Bar	DN52001
30-120 * 10 Flat Copper Bar	DN52230
30-120 * 5/10 Punched Flat Copper Bar	DN52742



ZHEJIANG GRL ELECTRIC CO.,LTD.

Add:No 246,Weishi Road,Yueqing Economic
Development Zone,Zhejiang PR,China
Tel: 86-577-62690055 Fax: 86-577-62702791

Website: www.fusesbase.com

E-mail: sales@grlele.com

This product manual is printed by GRL .It is only used to explain the relevant information of this series of products.The information might be updated base on the technical upgrade or update, GRL holds the right to update the manual without prior notice. Welcome to contact GRL for more details.

GRL Electric All Rights Reserved.

G19A02

Design by YAD